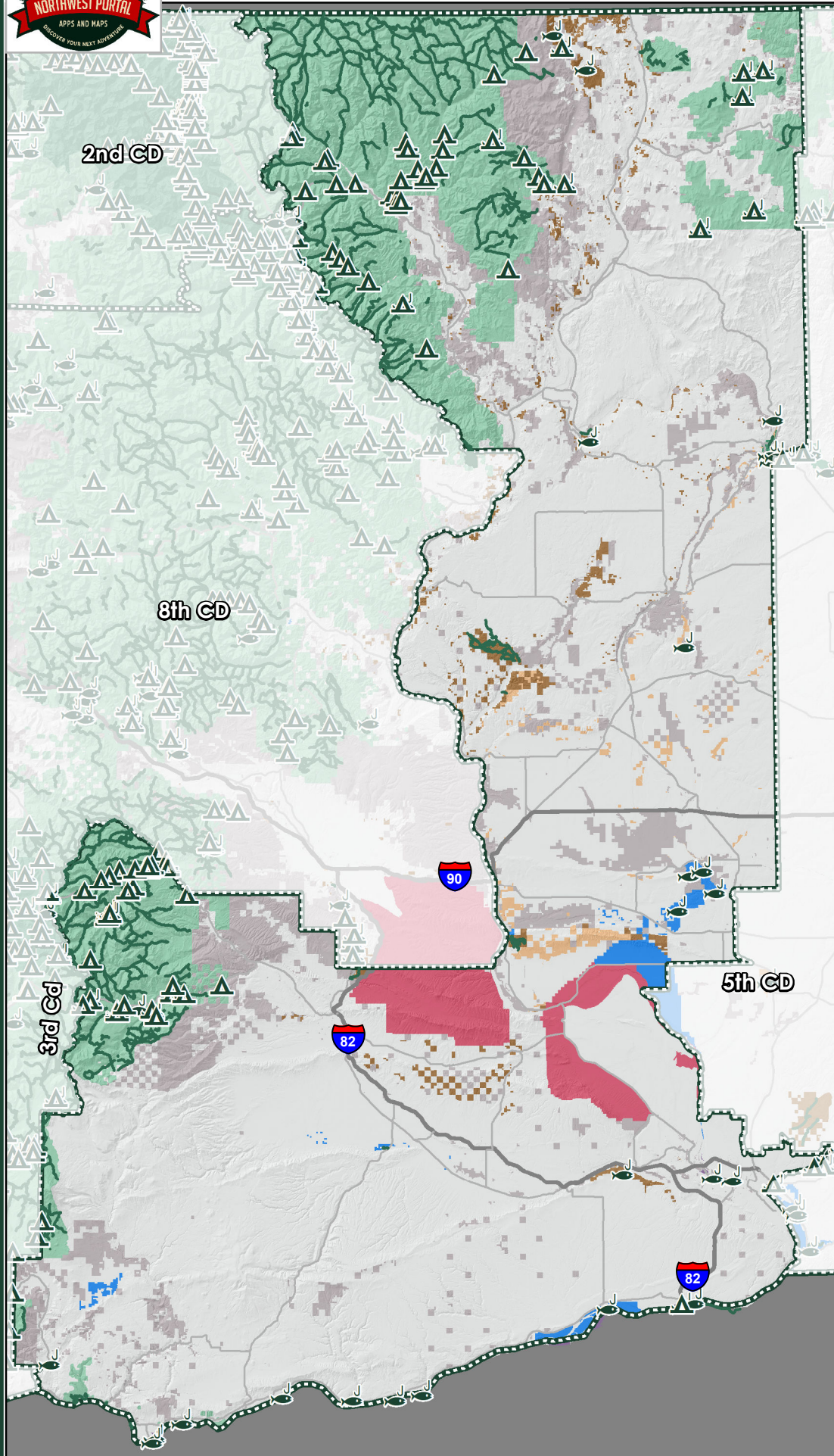
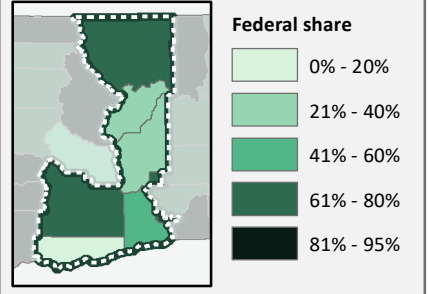




Federal Recreation: Washington's 4th Congressional District



Share of Recreation Land that is Federal in the 4th Congressional District



Federal Recreation resources in the 4th Congressional District *

- 2,342,000 acres of federal recreation land, 66% of total.
- 1,575 miles of federal trails, 78% of trails.
- 77 water access sites, 16% of the total.
- 73 campgrounds, 52% of the total.

Federal agencies with recreation in the district:

- Army Corps of Engineers,
- Bureau of Land Management
- National Park Service
- US Bureau of Recreation
- US Fish & Wildlife Service
- US Forest Service

Other federal lands with restricted access:

- Yakima Training Center (US Army)
- Hanford Reach (Department of Energy)

* Share of recreation land that is federal by County

Federal recreation

- ▲ Campground
- ⌋ Water Access
- Trails
- ⊞ Congressional District

Recreation Land

- Army Corp of Engineers
- Bureau of Land Management
- National Park Service
- US Bureau of Reclamation
- US Forest Servc
- US Fish & Wildlife Service
- Non-Fed
- Restricted Access

Data is from the Northwest Portal's data set of Washington State recreation. More information, maps and a form to request additional materials to advocate for Federal Recreation available at: nwpmaps.com/federal

